

Little Discoveries  
right in your own backyard



Butterfly  
Pavilion

Annual  
Report

2007

## Our Vision

The vision of the Butterfly Pavilion is to be the premier invertebrate educational center in the nation.

## Our Mission

The Rocky Mountain Butterfly Pavilion exists to foster an appreciation of butterflies and other invertebrates while educating the public about the need for conservation of threatened habitats in the tropics and around the world.

## Core Values

**Education**—We will share our passion for the natural world by providing the very best instruction and services to a diverse public. We seek to promote curiosity and discovery among our patrons, from toddlers to seniors.

**Environment**—We will teach stewardship and conservation and embrace sustainability and diversity locally and globally.

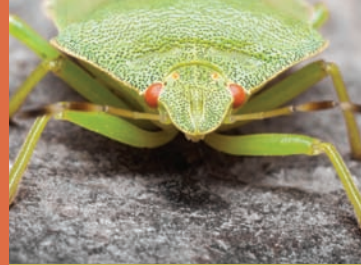
**Inquiry**—We will seek creativity, rigorous inquiry, analysis, documentation and communication as we become a premier research center to explore the science of butterflies and other invertebrates.

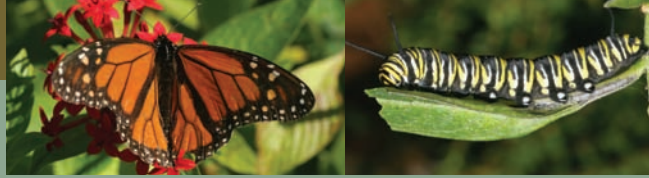
**Service**—We are ever mindful that we exist to serve the community. We will honor and respect the differences of those we serve and value the confidence and trust of our patrons.

**Leadership**—We will seek excellence in decision-making and fiscal responsibility, being bright and thoughtful about solutions to problems. We will constantly assess our policies and programs.

**Integrity**—We, the leadership, board of directors and the staff of the Butterfly Pavilion, will hold ourselves to the highest ethical and moral standard.

**Pride**—We will foster a sense of pride in our institution and will always thoughtfully pursue ways to promote growth, sustainability and improvement of the Butterfly Pavilion.





## Dear members and Friends,

It is a pleasure to report that fiscal 2007 was another remarkable year for the Pavilion. We met our benchmark in targeted goals and are well on our way towards the completion of the mandates of the Pavilion's strategic plan. It is a pleasure to note that we were favored as being the recipient of almost \$300,000 in philanthropic contributions. Some of the funds were used to expand and or perpetuate a variety of education programs. The remaining, larger share was dedicated to the creation of the Discovery Garden, an outdoor educational space that acts as an interface between classroom education and Big Dry Creek open space. It is also a wonderful venue for reflection, introspection and marveling at the native flora and fauna of Colorado.

Our mission emphasizes the appreciation of butterflies and other invertebrates and the conservation of threatened habitats. We feel that the latter needs to gain a greater profile and needs to be added to our curriculum as environmental conservation. All life balances on the delicate fulcrum of the invertebrate world. Invertebrates support all other life and are first to make measurement and record changes in environment. Equally emphasizing invertebrates and the environment, the Butterfly Pavilion works toward maintaining and establishing a green organization. As we encourage others to be cognizant of the fragility of our environment and the need for people to take action individually and collectively, we wish to be certain that the Pavilion not only acts as an inspiration but as an exemplar of the tenants of creating a wholesome and sustainable environment.

The Board of Directors continues to reinvent itself with new ideas and varied perspectives. This makes for a much healthier, responsive and well-governed organization. The management of the Pavilion remains stable, passionate and committed. This is felt to be very important in maintaining the continuity of our environmental and core values, as well as consistency in the management of the organization. Amongst the varied challenges that the

Pavilion faces during these mercurial times is the creation of a steady flow of philanthropic gifts (revenue).

One of the challenges for the new fiscal year is to devise a plan for the acquisition of a fund development director and then to execute that plan. The Pavilion is in its 12th year of existence and is still considered to be in the early stages of its life cycle. The three principal sources of revenue are our visitors, our gift shop, and the Scientific & Cultural Facilities District. As you can see, the chief element that is wanting is that of creating an annual base for continued financial support for operations programs and capital projects. Obviously, the key to the fund development director's success is your engagement, involvement and generosity. Hopefully, in the very near future, you will gain the satisfaction of providing financial support for the wonderful education programs that the Pavilion provides for tens of thousands of school children and adults. Be assured that one or more of these youngsters will be a positive influence in our ever-changing world. With your support, we will continue to be one of Colorado's premiere educational institutions and fascinating attractions. We are perennially rated by both the Rocky Mountain News and the Denver Business Journal to be in the top tier of Denver metro attractions. As a matter of fact, the Rocky Mountain News has us rated as number four, and this is because of your dedicated and continuous support. Considering the stable foundations of our board, staff, and financial position we anticipate continued growth, and that fiscal 2008 will bring about the fulfillment of new promises and greater achievements.

Sincerely,

Robert J. Bonacci  
President/CEO

Bill West  
Board of Directors' Chair

## Fun Fact

Take-home activity sheets teach families how to explore the outdoors together while learning about native species and their importance for our environment.



## Learn

Education lies at the core of the Butterfly Pavilion's mission. Youth Education, Lifelong Learning and Volunteer Departments play a vital role in enlightening students and residents of the SCFD and the broader community about the importance of invertebrates and the conservation of habitat globally. Highlights include the following:

### Youth Education

- The Butterfly Pavilion Education Department continued to expand its conservation education efforts in the community.
- The Pavilion served more than 36,512 students in the 2006/2007 school year. Providing state content, standards-based educational presentations, we continue to successfully meet the curricular needs of the Colorado school systems.
- Youth outreach programming has proven to be extremely strong. A record number of 335 programs served more than 10,000 students with standards-based, hands-on education.
- In response to a growing need for after-school education, the Youth Education Department expanded its after-school programming to 6 elementary and middle schools with Aurora Public Schools, Denver Public Schools, and Jefferson County.
- We were also able to assist more than 4,000 under served, low-income, and Title I students from 134 groups in the Denver metropolitan area with admission assistance for classes and visits as well as transportation assistance to and from the facility.
- Youth Education also set the stage for greater impact in 2008 by developing a number of fruitful collaborative relationships. We began a partnership with Adams County's 50 elementary schools, developing the SEED program, a standards-based, multiple-contact educational opportunity through both outreach and on-site programming. We also teamed up with Bug Songs to develop an auditorium-style outreach program capable of serving more than 100 children at once.



## Lifelong Learning

In addition to our success in the youth education arena, the Lifelong Learning Department has expanded its efforts with daily visitor programs as well as extracurricular learning opportunities.

- Bug Talk (classroom-based) free visitor programs grew in 2007 to provide an extensive educational resource to more than 4,300 visitors in 203 groups! Some of the highlights included weekly children's story time, monarch migration, Pavilion butterflies, and Garden Bug Hunts.
- Adult and Senior Class and Visit Program provided 63 programs serving nearly 900 people and outreach programs served more than 2,000 seniors. In collaboration with the Horticulture Department, Pavilion Volunteers, Master Gardeners of Colorado, and Tagawa Gardens, the Senior Habitat Gardening Program worked with 4 senior centers in the development of habitat gardens on their sites.
- Collaborating with the Colorado School of Mines, teacher enrichment workshops trained regional educators on techniques of implementing much needed standards-based inter-disciplinary invertebrate curriculum in their classrooms. A survey went out to all past Teacher Workshop participants in order to evaluate the content and impact of our program. Of the teachers surveyed, 78 percent of teachers stated that the reason they took Butterfly Pavilion workshops was to get age-appropriate science content from a reputable source, and more than 87 percent of the responding teachers stated that they regularly used content from the workshops in their classroom!
- In July, we offered our third annual Insectival, which included fun family-oriented activities, classroom programs and collaborations with area organizations like the Museum of Nature and Science, Denver Audubon Society, the Denver Zoo, and many others.

## Volunteer Programs

Volunteers continue to be the lifeblood of the Pavilion and an incredible benefit to the community.

- In 2007, volunteer recruitment continued to make significant strides by increasing the total number of volunteers by nearly 10 percent. We finished 2007 with 145 volunteers, up from 133 volunteers at the end of 2006.
- Pavilion volunteers contributed more than 9,165 hours at a value of \$156,078! A volunteer survey done in 2007 helped us define areas for departmental growth and ways to continue to improve the volunteer experience at the Pavilion.
- We continue to make huge strides in the refinement and expansion of our volunteer training program as well as providing new opportunities for volunteers to expand their interests and contributions. In 2007, we were able to offer 22 different training opportunities with an average class size of seven volunteers!

Education



# Discover

Butterflies and other animals are the zoological masterpieces of nature that form the core of the Butterfly Pavilion's full-immersion experiential education program. Thousands of animals are cared for by the curatorial staff, a group of superb scientists who apply their knowledge, skills and abilities to the maintenance of our collection. Highlights include the following:

- The curatorial staff (7 staff members) manned three major public exhibit areas at the Butterfly Pavilion as well as the behind-the-scenes areas: Crawl-A-See-Em (handling of Rosie the tarantula and Madagascar hissing cockroaches), Water's Edge (marine invertebrate interactive display), Wings over the Tropics (butterfly house), Rearing Room (care, husbandry, and preparation room), and Chrysalis Room (preparation and presentation room for Lepidoptera pupa).
- The curatorial team presented educational butterfly releases to the public twice a day throughout the year, amounting to 718 releases annually.
- In 2007, the Butterfly Pavilion imported 40,183 butterfly and moth pupae. From our rates of emergence, we flew an average of 1,100 Lepidoptera each day.
- 2007 also saw a realization of space for our live collection. Several animal cutbacks were made to create more room for new and different species of invertebrates. Our Rearing Room space is limited, so this effort provides us more room for growth in the areas of research.
- We continue to collect data in a growth study of the Chilean rose hair tarantula (*Grammostola rosea*). We are currently in our third year of data collection. This species of tarantula is slow-growing. Once the tarantulas become adults, we will be able to track *Grammostola rosea* reproduction.



# Curatorial

# Explore

As wildlands shrink, gardens can provide necessary resources for many species of invertebrates. In 2007, the Horticulture Department continued to pursue its philosophy of bringing plants, people, and wildlife together. Whether by teaching kids to build their own miniature rain forest or by encouraging gardeners to appreciate beneficial insects, our horticulture staff and volunteers contributed time, hard work, and expertise to the cause of habitat gardening.

- The installation of the Discovery Garden in September 2007 effectively doubled the Butterfly Pavilion's cultivated area. The Discovery Garden provides habitat for wildlife and serves as an outdoor classroom space and an attractive venue for community gatherings. Educational programming promoting conservation and responsible gardening practices will continue to grow along with this colorful, inviting space.
- The Horticulture Department brought more Butterfly Pavilion visitors into the gardens in the past year by offering frequent tours and ladybug releases. The outdoor habitat gardens are also the site for our popular Bug Safaris—a chance for people to catch, examine, and release some of our intriguing garden denizens. In one flowerbed alone, Butterfly Pavilion staff found 12 different species of bees.
- This past year, horticulture staff and volunteers gathered data pertaining to integrated pest management, butterfly feeding patterns, and plant growth and development. By applying this information to current gardening practices, our horticulturists will be able to achieve an environment that allows plants, people, and wildlife to flourish.

Horticulture



## Fun Fact

Zookeepers purchase captive-bred animal species whenever possible, further protecting wild populations that may soon become endangered. Initial research is underway to captive-breed key tarantula species onsite.



## Fun Fact

The Butterfly Pavilion purchases recycled paper and environmentally-friendly office supplies whenever possible.

## Give

### Rocky Mountain Butterfly Consortium Statement of Financial Position December 31, 2007 (with comparative totals for 2006)

<b>Assets</b>	<b>2007</b>	<b>2006</b>
Cash and cash equivalents—unrestricted	\$ 379,273	\$ 575,920
Cash and cash equivalents—temporarily restricted	16,267	114,275
Accounts receivable	7,485	11,681
Grants receivable	-	80,240
Gift shop inventory	219,873	167,475
Investments (Note 3)	103,147	6,368
Net property and equipment (Note 4)	4,477,819	4,299,551
Amortized bond issuance costs	29,904	42,805
Beneficial interest of assets held by others (Note 7)	33,692	30,052
<b>Total assets</b>	<b>\$5,267,460</b>	<b>\$5,330,367</b>
<b>Liabilities and Net Assets</b>	<b>2007</b>	<b>2006</b>
<b>Liabilities</b>		
Accounts payable	\$ 29,450	\$ 42,086
Accrued payroll costs	47,473	31,000
Deferred memberships	76,873	76,679
Bonds payable (Note 5)	1,615,000	1,856,033
<b>Total liabilities</b>	<b>1,768,796</b>	<b>2,005,798</b>
<b>Net Assets</b>		
Unrestricted		
Operating	589,720	634,437
Net investment in fixed assets	2,862,819	2,465,999
Temporarily restricted (Note 6)	16,267	194,275
Permanently restricted (Note 7)	29,858	29,858
Total net assets	3,498,664	3,324,569
<b>Total liabilities and net assets</b>	<b>\$5,267,460</b>	<b>\$5,330,367</b>



# Financials

## Rocky Mountain Butterfly Consortium Statement of Activities for the Year Ended December 31, 2007 (with comparative totals for 2006)

				2007	2006
	Unrestricted	Temporarily Restricted	Permanently Restricted	Total	Total
<b>Revenue and other support</b>					
Admissions	\$ 1,044,838	\$ -	\$ -	\$ 1,044,838	\$ 1,038,580
Museum store revenue/concessions	636,490	-	-	636,490	620,002
SCFD	551,040	14,463	-	565,503	561,973
Program fees	184,889	-	-	184,889	163,713
Donations	18,891	130,873	-	149,764	203,928
Memberships	149,356	-	-	149,356	140,217
Investment income	17,883	-	-	17,883	17,517
Insurance settlements (Note 8)	-	-	-	-	24,474
Other	6,952	-	-	6,952	15,631
In-kind contributions (Note 9)	-	-	-	-	-
Net assets released from restrictions (Note 10)	323,344	(323,344)	-	-	-
Total revenue and other support	2,933,683	(178,008)	-	2,755,675	2,786,035
<b>Expenses</b>					
Program services					
Admissions/Museum store	697,056	-	-	697,056	661,792
Curatorial and invertebrate science	418,486	-	-	418,486	373,928
Education	408,034	-	-	408,034	314,064
Pavilion facility operations	290,571	-	-	290,571	250,888
Horticulture	180,615	-	-	180,615	199,524
Pavilion volunteer support	69,494	-	-	69,494	68,466
Total program services	2,064,256	-	-	2,064,256	1,848,662
Supporting services					
Administration	295,334	-	-	295,334	314,025
Marketing, promotion and membership	207,134	-	-	207,134	216,954
Fundraising	14,856	-	-	14,856	17,240
Total supporting services	517,324	-	-	517,324	548,219
<b>Total expense</b>	<b>2,581,580</b>	-	-	<b>2,581,580</b>	<b>2,416,881</b>
Change in net assets	352,103	(178,008)	-	174,095	369,154
<b>Net assets, beginning of year</b>	<b>3,100,436</b>	<b>194,275</b>	<b>29,858</b>	<b>3,324,569</b>	<b>2,955,415</b>
<b>Net assets, end of year</b>	<b>\$3,452,539</b>	<b>\$16,267</b>	<b>\$29,858</b>	<b>\$3,498,664</b>	<b>\$3,324,569</b>

# Act

## Staff

The Butterfly Pavilion is a multifaceted educational institution, and its operations require the efforts of a talented, passionate, and dedicated staff. Their commitment to the mission and vision of our organization bring life and vitality to our programs.

Sandra Adams  
*Full-charge Bookkeeper*

Kim Delashmit  
*Marketing Director*

Kendra Jackson  
*Sales Associate*

Kat Archer  
*Zookeeper*

Teresa Donn  
*Zookeeper*

Cynthia Killingbeck  
*Admissions & Retail Manager*

Janay Barfoot  
*Outreach Instructor*

Amanda Douglass  
*Special Events  
Coordinator/Sales*

Megan Lanning  
*Outreach Presenter*

Jessica Bell  
*Asst. Manager—Gift Shop*

David Ennis  
*Outreach presenter*

Carna Lapping  
*Special Events  
Coordinator/Sales*

Freya Berntson  
*Zookeeper*

Matthew Espinoza  
*Sales Associate*

Kathi Legge  
*Special Events  
Coordinator/Sales*

Nicole Bickford  
*Youth Education Manager*

Valerie Gillis  
*Sales Associate*

Marilyn Love  
*Sales Associate*

Robert Bonacci  
*President/CEO*

Carissa Goddard  
*Zookeeper*

Kendra Lubchenco  
*Secretary/Receptionist*

Samantha Book  
*Sales Associate*

Alexsandra Godsil  
*Sales Associate*

Sonia Lujan  
*Sales Associate*

Mary Broughall  
*Zookeeper*

Kathryn Greeson  
*Zookeeper*

Kelley Nieser  
*Sales Associate*

Nichole Bushman  
*Admissions & Retail Manager*

Tanya Griego  
*Sales Associate*

Sabrina Orlando  
*Membership/Donor  
Relations Manager*

Brenda Collison  
*Outreach Presenter*

Mary Ann Hamilton  
*Curatorial Manager*

Anastasia David  
*Supervisor—Gift Shop*

Lisa Hettinger  
*Sales Associate*

David Peacock  
*Custodian*

Joann Dawe  
*Adult Outreach Instructor  
& Youth Outreach Instructor*

Heather Hodgkin  
*Horticulture Asst.*

Joey Pettit  
*Birthday Ambassador*

Patrick Dazevedo  
*Custodian*

Stephanie Hollister  
*Zookeeper*

Dee Pierce  
*Supervisor—Gift Shop*

Justin Deines  
*Custodian Supervisor*

Cynthia Jackson  
*Special Events Asst.*

Kris Pohl  
*Adult Education Specialist  
& Volunteer Coordinator*



Amber Presti  
*Secretary/Receptionist*

Denise Price  
*Birthday Coordinator  
& Outreach Presenter*

Richard Pulhamus  
*Zookeeper*

Jennifer Ramirez  
*Sales Associate*

Kelly Raymond  
*Sales Associate*

Dayna Rich  
*Asst. Horticulturist*

Jordyn Sheffler  
*Sales Associate*

Constantin Sileki  
*Custodian*

Stephanie Sisroy  
*Adult Outreach Instructor  
& Special Events Asst.*

Ardiana Sonka  
*Sales Associate*

Rachel St. Clair  
*Outreach Presenter/Fill-in Birthday  
Ambassador*

Marcos Stoltzfus  
*Education Asst.*

Charlotte Swatek  
*Intern: Youth Educator*

Patrick Tennyson  
*Director of Education*

Erin Terasaki  
*Sales Associate*

John Tyler  
*Zookeeper*

Kimberly Urish  
*Membership/Donor  
Relations Manager*

Karen Vitco  
*Zookeeper*

Kevin Vitco  
*Zookeeper*

Robin Walker  
*Sales Associate*

Khanh Whiteman  
*Zookeeper*

Kristina Williams  
*Curatorial Manager*

Jessica Wilson  
*Full-charge Bookkeeper*

Amy Yarger  
*Horticulture Director*

## Fun Fact

A new outdoor garden includes a Xeriscape demonstration plot, teaching visitors how to landscape for both beauty and water-efficiency.

# Thank you



## Volunteers (by hours 1994 – 2007)

The dedication of our volunteer corps is essential to our visitors' experience. From assisting guests to hold Rosie, our Chilean rose hair tarantula, to teaching youth education classes, tending our gardens, or answering questions in our conservatory, these individuals are critical to the daily operations of our facility. We thank them for their generosity, enthusiasm, and talent.

### 5,000 hours +

Warren Fair  
Fred Linck

### 1,000 – 4,999 hours

Joann Dawe  
Annemarie Garza  
Francis Haas  
Lora Kreutzer  
Ernest Merkel  
Barbara Portz  
David Sherman  
Mike Sipes  
William Vickers  
Kenneth Williams

### 500 – 999 hours

Elizabeth Archer  
Alice Doyle  
Cathy Fennelly  
Virginia Hokenson  
Richard Jarboe  
Nancy Jessee  
Carol McCracken  
Derek McCracken  
Andrea Shelby  
John Shofner  
Kathy Shofner

### 100 – 499 hours

Kyle Andrews  
Pat Baldwin  
Paul Bay  
Samantha Bonelli  
Mary Broughall  
Yolanda Cole  
Ross Echtermeyer  
David Ennis  
David Fending  
Gary Gagnon  
Ardy Gardner  
Alex Gray  
John Hoyman  
Brandon Idelberger  
Jody Jagersky

Moira Jones  
Bunny Kleinhenz  
Anita Liuzzi  
Shirley McConnell  
Jan Milner  
Lorraine Montoya  
Bonnie Moore  
Amanda Noland  
Cheryl Patrick  
Karissa Proctor  
Lynn Riley  
Sherry Rubinstein  
Sherry Ruby  
Diane Saucier  
Jo Smith  
Rebekah Tomsick  
Jennifer Turner-Valle  
Judith Wilbourn  
Fred Yahrling  
BP Friends  
MetroVolunteers

### 99 and fewer hours

Cathleen Adams  
Brandon Barnes  
Rachel Bechhoefer  
Priscilla Bergstrom  
Gretchen Bolivar  
Elizabeth Boyd  
Bob Brown  
Dorothy Burhorn  
Adam Burke  
Kyle Conrad  
Cathy & Donn Cook  
Alexandrea Degenstein  
Ryan Dennie  
Janet Dills  
Nancy Dukes  
Yvette Ellsworth  
Bradford Ellsworth  
Nedra Fortune  
Madeline Frey  
Nancy Gremel  
Heather Hodgkin  
Martha Jones

Patricia Kaowthumrong  
Micki Kemper  
Bob Krugmire  
Sandra Lins  
Janet Lutz  
Jeanne McAtee  
Judith McFadden  
Anna McNamara  
Jane Meyer  
Angela Miller  
Reta Mounger  
Walter Penny  
Amanda Pruess  
Dick Pulhamus  
Taylor Pulhamus  
Kathy Raaf  
Jo Rasmussen  
Kevin Roberts  
Cory Sargeant  
Jennifer Schrant  
Teri Schuch  
Stephanie Sisnroy  
Leah Smith  
Tim Sorensen  
Randy Sorenson  
Tina Stein  
Sarah Swan  
Paula Teeple  
Maureen Tooher  
Kimberly Urish  
Christy Velasquez  
Vanessa Wanjiru  
Iner Ward  
Virginia Ward  
Cindy Weisskopf  
Kyle Wickers  
Jody Wickers  
Lauren Young  
RSVP Seniors  
Mile High Youth Corps  
CSU Entomology Club  
Mortar Board-CU  
Target Volunteers  
JeffCo Master Gardeners



## Fun Fact

By purchasing butterfly chrysalides from farmers in the tropics, the Butterfly Pavilion supports rainforest sustainability worldwide.

### 2007 Board of Directors

Loretta R. Cawelti  
*Chair*

Chalmer William West  
*Vice Chair*

Mary Dambman  
*Treasurer*

Larry Dubois

Ron Cabrera

Andrea Forrest

Fran Haas

Ned Lidvall

Mindy Meiklejohn

Carole Pool

Luanne Williams

### Scientific Advisory Board

Paula E. Cushing, Ph.D.  
*Curator of Entomology & Arachnology,  
Denver Museum of Nature & Science*

Deane Bowers, Ph.D.  
*Professor & Curator of Entomology,  
University Museum, University of Colorado*

James E. Klett, Ph.D.  
*Department of Horticulture & Landscape  
Architecture, Colorado State University*

Paul A. Opler, Ph.D.  
*Department of Bio-Agriculture Sciences &  
Pest Management, Colorado State University*

Boris C. Kondratieff, Ph.D.  
*Department of Bio-Agriculture Sciences &  
Pest Management, Colorado State University*

Derek A. McCracken, Ph.D.  
*Retired Associate Professor of Biological  
Sciences, Illinois State University*

### In-Kind Contributors

Beau Jo's Restaurants

Butler Rents, Inc

Mr. Ralph E. Collister Jr.

Fixler Davis

Gordon Biersch Brewery

Mr. Mark Hannon

Mr. Jon Holmberg and  
Mrs. Courtney Holmberg

Ms. Jessa Huebing-Reitinger  
and Mr. James Huebing

Leonard Lewin

The Makery

Michaels

Old Chicago

PetSmart

Splitz Bowling

Target—Westminster

## SCFD

The Butterfly Pavilion received funds from the Scientific & Cultural Facilities District (SCFD). In 1988, voters in the Denver metro area created SCFD to provide a consistent source of unrestricted funding to scientific and cultural organizations. Since then, the SCFD has funded more than 300 organizations via the 0.1% retail sales and use tax (one penny on every \$10). Adams, Arapahoe, Boulder, Broomfield, Denver, Douglas, and Jefferson Counties comprise the district.



### Grantors

#### \$40,000+

Colorado Garden Show, Inc.

#### \$20,000+

Boettcher Foundation  
Gates Family Foundation

#### \$10,000+

Anschutz Foundation  
Denver Foundation

#### \$5,000+

Arrow Electronics

#### \$1,000+

City of Westminster  
Janus Foundation  
The Nice Group  
at Smith Barney

Tagawa Garden  
Center & Florist  
Target Community Relations  
Westminster Legacy  
Foundation

### Patron Level Donors

#### \$500+

Hobby Town USA  
Mr. Ned Lidvall  
Ms. Mindy Meiklejohn  
Mrs. Carole D. Pool  
and Mr. Bill Pool  
Summit Bank & Trust  
Suzanne Piskadlo  
Taylor, Roth & Company, PLLC

#### \$250+

Ms. Loretta Cawelti  
and Mr. Don Cawelti  
Explore Elementary  
at Bertha Heid  
Mr. Francis X. Haas  
and Mrs. Carol M. Haas  
Saira Hamidi  
Mrs. Lisa Jackson  
and Mr. Mark Jackson  
Michelle King  
Mr. Bryan Lees  
and Ms. Kathryn Lees  
Mr. Chalmer William West  
and Ms. Judith Ann West  
The Westin Hotel  
—Westminster

Ms. Luanne Williams  
and Mr. R. Marc Williams  
Mrs. Cindi Viola  
and Mr. John Viola

#### \$100+

Ms. Erin Arsenault  
and Ms. Miriam Saunders  
Mr. Donald Avsec  
and Mrs. Sandra Avsec  
Ms. Stacey Bahr  
and Mr. Ira Bahr  
Ms. Charlotte Barchers  
and Ms. Abigail Simon  
Ms. Susan Bauer  
and Mr. Vernon Bauer  
Mr. Robert Bonacci  
and Mrs. Toni Bonacci  
Ms. Susan Brandt  
and Mr. William Hampton  
Ms. Shawna Busby-Hirman  
and Eric Hirman  
Mr. Ronald Cabrera  
Ms. Tiffany Carlson  
and Mr. Brian Carlson  
Mr. Josh Carter  
and Mrs. Daria Carter  
Mrs. Mary Chady  
and Mr. Stephen Chady

Ms. Georgia Christensen  
and Mr. Gerald Christensen  
Ms. Bobbi Close  
and Mr. Tim Close  
Mrs. Frances J. Coet  
and Mr. John R. Coet  
Mrs. Carolyn Cox  
and Mr. Cal Cox  
Ms. Rachel Crouse  
Ms. Katherine Dauterman  
Dianka Jewelry Designs  
Mrs. Leighann Dill  
and Mr. David Dill  
Mr. Brian Dodd  
and Mrs. Debra Dodd  
Mrs. Yvonne El-Danaf  
and Mr. Mahmoud El-Danaf  
Ms. Cathy Fennelly  
and Lael Moe  
Mrs. Pam Friskopp  
and Mr. Paul Friskopp  
Ms. Kathy Gauduello  
and Ms. Jessica Haley  
Ms. Shelly Gerding  
and Mr. David Gerding  
Mrs. Lori Giacomino  
and Mr. Jeff Giacomino

Mr. Richard Gordon  
and Mrs. Jennifer Gordon  
Mrs. Diane Gray  
and Mr. Gray Gray  
Mrs. Carolyn J. Grant  
and Mr. Robert J. Krenz  
Mr. Arthur Gutierrez  
and Ms. Barbara Gutierrez  
Mr. Francis X. Haas  
and Mrs. Carol M. Haas  
Joe and Kathy Hankin  
Mr. H. Michael Hayes  
Mr. Randal Heinz  
and Mrs. Norma Heinz  
Mr. Nathan Holt  
and Ms. Kelly Holder  
Ms. Kathryn Huwaldt  
and Mr. Michael Huwaldt  
Impossible Pictures  
Mr. Todd Jacobs  
and Ms. Naomi Beth Jacobs  
Ms. Lori Januszewski  
and Mr. Michael Januszewski  
Ms. Sandra Jolley  
Mr. Thomas E. Jorden  
and Mrs. Tamara J. Jorden

Mr. Lewis Keenan  
and Mrs. Barbara Keenan

Ms. Janice Kinnin  
and Mr. Graham Beasley

Mr. John Kinsey  
and Ms. Julie Kinsey

Ms. Birdie Klingensmith

Mr. Richard Koch  
and Mr. Douglas Koch

Mr. Kevin Koslov  
and Mrs. Gail Koslov

Ms. Sarada Krishnan  
and Mr. Hari Krishnan

Mr. Bob Krugmire

Mr. Carl Kuehn  
and Mrs. JoDee Kuehn

Mrs. Beth Leuchten  
and Mr. Bill Leuchten

Ms. Julia Cross Lingsang

Mrs. Meghan Mariner  
and Mr. Collin Mariner

Ms. Susan Marquez  
and Mr. Bill Marquez

Ms. Maria Matney  
and Mr. Kevin Matney

Mr. Dean McFail  
and Ms. Dory McFail

Miller Farms

Mrs. Phyllis LB Mize

Mr. Larry Moore  
and Mrs. Nancy Moore

Mr. Stephen Nealley  
and Ms. Cindy Nealley

Mrs. Rhonda Nelson  
and Mr. Jerry Nelson

Ms. Carol A. Neustadter  
and Mr. Kevin G. Neustadter

Mr. Robert C. Newman  
and Mrs. Judi S. Newman

Mrs. Carolyn O'Brian  
and Dr. Thomas O'Brian

Mr. David Paul  
and Ms. Sandy Paul

Mrs. Angelique Plath  
and Mr. Jeffrey Plath

Mrs. Carole D. Pool  
and Mr. Bill Pool

Ms. Tonya Powers  
and Mr. Gary Seils

Ms. Mary Read  
and Mr. Jim Read

Mrs. Carol Robison  
and Mr. Ben Robison

Rean Robl

Mr. Jeff Rumbyrt  
and Mrs. Kelley Rumbyrt

Mrs. Holli Safron  
and Mr. Scott Safron

Miss Allison Sanford  
and Miss Kathy Sanford

Mr. Paul Sanzo and  
Ms. Maureen O'Mara-Sanzo

Mr. Phillip M. Schein  
and Ms. Jane Schein

Ms. Peg Schroeder  
and Ms. Tammy Drozda

Mrs. Kathaleen Shaner  
and Mr. Todd Shaner

Mr. Allen E. Stanley  
and Ms. Yvette Stanley

Ms. Tiffany Teller  
and Ms. Kim Jackson

Binah Thillairajah  
and Sothi Thillairajah

Ms. Theresa Thorne  
and Mr. Gerald McLaughlin

Ms. Audrey E. Vaseen

Mrs. Julie Volckens  
and Mr. Rob Volckens

Ms. Elaine Vuong

Ms. Rebecca Wacker  
and Mr. Paul Wacker

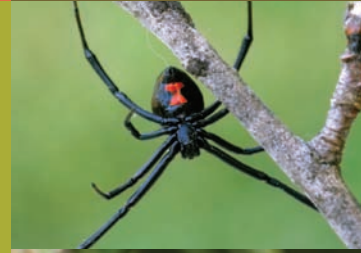
Ms. Virginia Ward

Mr. Chalmer William West  
and Ms. Judith Ann West

Ms. Luanne Williams  
and Mr. R. Marc Williams

Ms. Jacqueline Woodrum  
and Mr. Mark Woodman

Ms. Lori Rae Worland



## Fun Fact

A new activity station teaches visitors about the value of composting and identifies appropriate compost material commonly found in visitors' homes.



## Butterfly Pavilion

6252 West 104th Avenue  
Westminster, CO 80020

303-469-5441  
[www.butterflies.org](http://www.butterflies.org)

# A Sustainable Environment For Us All

A sustainable environment is one that maintains balance between all of its varied and numerous components. The arguable question today is: Is the environment being diminished and degraded by the practices of its human occupants? Can we as proprietors, or more appropriately as stewards, be more sustainable in our approach to the environment? From the perspective of the Butterfly Pavilion, the answer is YES.

For the first time in decades, mass interest in our global environment has reemerged, and terms like *greenhouse gas*, *global warming* and *carbon footprint* have become part of the "hot topic" mainstream.

As a driving force in the awareness efforts on deforestation or the global warming issue, as well as countless other environmental concerns, the Butterfly Pavilion provides one of the most valuable resources Colorado has to perpetuate environmental change: **Education.**

We understand that with increased interest in the environment comes an increased level of both "good" and "bad" information about various environmental topics. As a leader in the field of environmental education, the Butterfly Pavilion's approach has always been to first identify areas of interest or concern. Then, by utilizing our scientific capacity as well as our expertise in interpretation, we create tools or opportunities to engage our community in dialog that provides the easiest and most effective methods to address issues rationally, without fear or bias. For example, the very basis of our Butterfly Conservatory's existence revolves around a simple and practical method of preventing deforestation by supporting butterfly farming as a sustainable agricultural practice globally.

We have had the unique pleasure of serving hundreds of thousands of visitors for over 12 years. In each of our exhibit areas, we have knowledgeable, dedicated zookeepers and passionate, well-informed volunteers to help address your concerns, field questions on environmental issues and to help alleviate incorrect information, so that each of us are able to make sound, informed choices. Ultimately, these choices will positively alter our children's future forever.

Sustainability is not a dream. It's a vision. Like all visions, it is a step-by-step process. People like you educating themselves about how they can do a lot of little things to make a very big difference. At the same time, fostering relationships with businesses and legislature furthers the goal of global sustainability. Again, we believe the first step in conserving our precious environment is education. Join us, and be a part of the solution!

